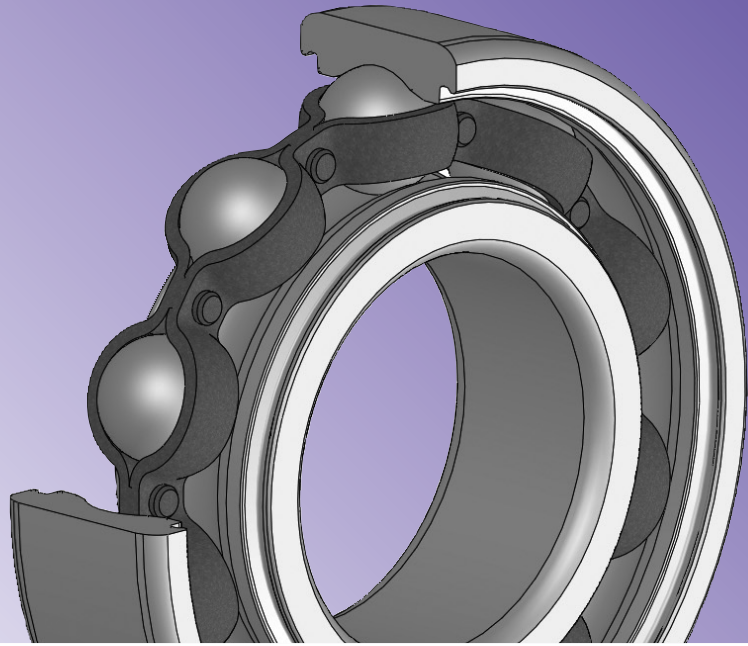


SMT

Grease-Free Bearings

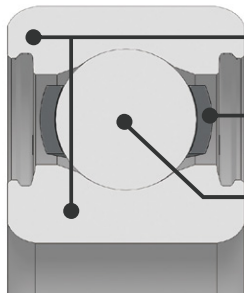


◎Features

No Lubricants Required

Usable without lubricants in environment where lubricants can not be used, by special coating on retainer.
Smooth rotation by low torque, except 2RS type.

◎Specifications

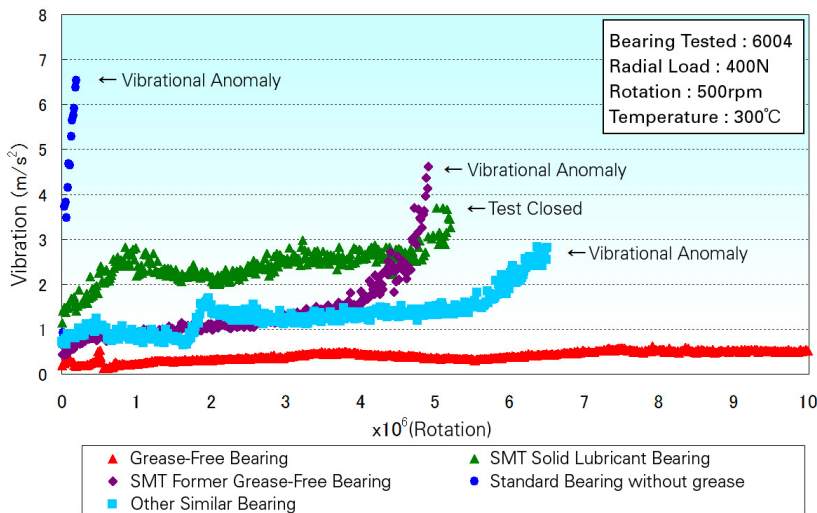


Outer and Inner Rings: AISI440C

Retainer: AISI304 + Special Coating

Balls: AUSI440C

◎Performance



◎Product Specifications

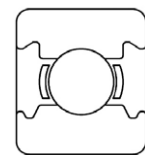
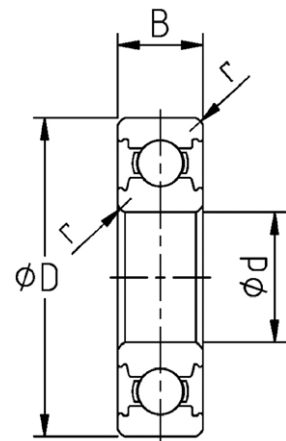
●Dimensions

Bearing Numbers	Bore	O.D.	Width	Chamfer	Allowable Radial Load N	Allowable Rotation min ⁻¹
	d	D	B	r Min.		
	mm	mm	mm	mm		
SS 6800TC2	10	19	5	0.3	90	1090
SS 6900TC2	10	22	6	0.3	115	980
SS 6000TC2	10	26	8	0.3	195	880
SS 6200TC2	10	30	9	0.6	215	770
SS 6300TC2	10	35	11	0.6	345	700
SS 6801TC2	12	21	5	0.3	80	950
SS 6901TC2	12	24	6	0.3	125	880
SS 6001TC2	12	28	8	0.3	215	770
SS 6201TC2	12	32	10	0.6	290	720
SS 6301TC2	12	37	12	1.0	415	640
SS 6802TC2	15	24	5	0.3	90	810
SS 6902TC2	15	28	7	0.3	185	730
SS 6002TC2	15	32	9	0.3	240	670
SS 6202TC2	15	35	11	0.6	325	620
SS 6302TC2	15	42	13	1.0	485	530
SS 6803TC2	17	26	5	0.3	95	730
SS 6903TC2	17	30	7	0.3	195	670
SS 6003TC2	17	35	10	0.3	255	610
SS 6203TC2	17	40	12	0.6	410	540
SS 6303TC2	17	47	14	1.0	580	480
SS 6804TC2	20	32	7	0.3	170	620
SS 6904TC2	20	37	9	0.3	275	550
SS 6004TC2	20	42	12	0.6	400	500
SS 6204TC2	20	47	14	1.0	545	460
SS 6304TC2	20	52	15	1.1	675	440
SS 6805TC2	25	37	7	0.3	185	520
SS 6905TC2	25	42	9	0.3	300	460
SS 6005TC2	25	47	12	0.6	430	440
SS 6205TC2	25	52	15	1.0	595	400
SS 6305TC2	25	62	17	1.1	880	350
SS 6806TC2	30	42	7	0.3	195	440
SS 6906TC2	30	47	9	0.3	310	410
SS 6006TC2	30	55	13	1.0	560	370
SS 6206TC2	30	62	16	1.0	830	340
SS 6306TC2	30	72	19	1.1	1140	300
SS 6807TC2	35	47	7	0.3	200	390
SS 6907TC2	35	55	10	0.6	445	350
SS 6007TC2	35	62	14	1.0	680	320
SS 6207TC2	35	72	17	1.1	1090	290
SS 6307TC2	35	80	21	1.5	1420	270
SS 6808TC2	40	52	7	0.3	210	350
SS 6908TC2	40	62	12	0.6	585	310
SS 6008TC2	40	68	15	1.0	715	290
SS 6208TC2	40	80	18	1.1	1240	260
SS 6308TC2	40	90	23	1.5	1730	240
SS 6909TC2	45	68	12	0.6	600	280
SS 6009TC2	45	75	16	1.0	895	260
SS 6209TC2	45	85	19	1.1	1390	240
SS 6309TC2	45	100	25	1.5	2260	210
SS 6910TC2	50	72	12	0.6	620	260
SS 6010TC2	50	80	16	1.0	930	240
SS 6210TC2	50	90	20	1.1	1500	220
SS 6310TC2	50	110	27	2.0	2640	190
SS 6911TC2	55	80	13	1.0	705	230
SS 6011TC2	55	90	18	1.1	1210	220
SS 6211TC2	55	100	21	1.5	1850	200
SS 6912TC2	60	85	13	1.0	860	220
SS 6012TC2	60	95	18	1.1	1250	200
SS 6212TC2	60	110	22	1.5	2230	180

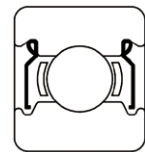
●Standard Specifications

Outer and Inner Rings	AISI440C
Balls	AISI440C
Retainer	AISI304 + Special Coating
Shield	AISI304
Seal	NBR

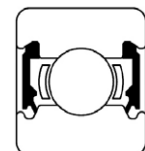
Standard radial clearance is basically C4.



OPEN



ZZ



2RS

The performance data and expressions are provided as a general guide only.
The specifications are subject to change without notice for the improvement of performance.

SMT

Nankai Seiko Co., Ltd.

3-6-1, Techno Stage, Izumi, Osaka 594-1144, Japan.

TEL 0725-53-5563 FAX 0725-53-5576

URL <http://www.smtbearing.com>

2016.11